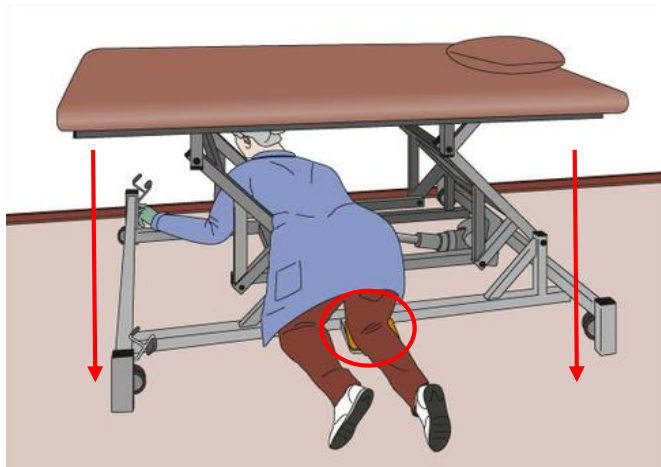


# ETUI Seminar – Improving Machinery Safety

## Treatment tables



© BGW / steindesign Werbeagentur GmbH

Michael Thierbach, KAN

## Quick couplers

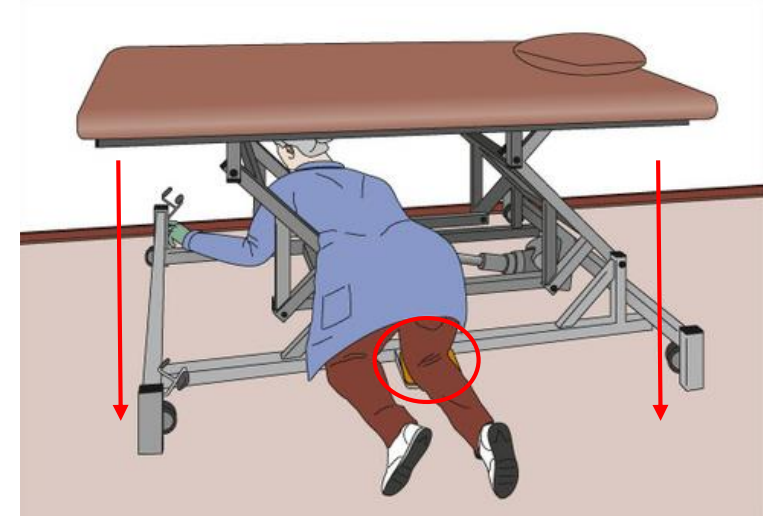


© Pic: Münch, BG BAU / photo composition: Steindesign

Brussels, 12 February 2019

# Fatal accidents on treatment tables

- 2016/2017 **fatal accidents** to employees
- further accidents with children, users and patients are known
- currently **no standard exists for treatment tables**
- in Germany: “locking box”  
(a rather organizational measure)

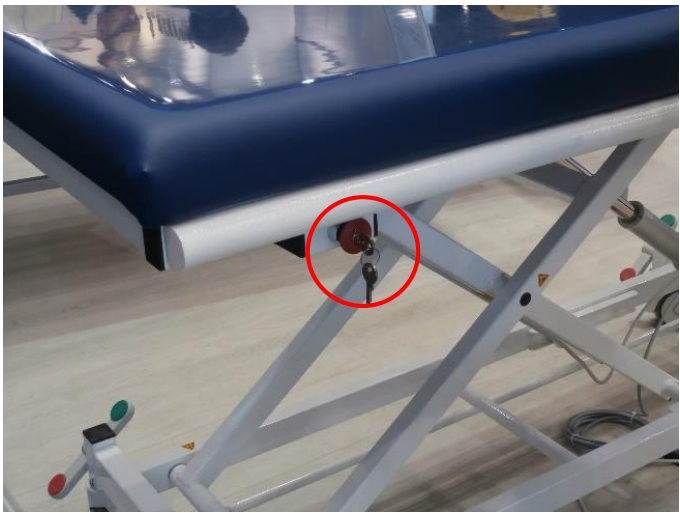


© BGW / steindesign Werbeagentur GmbH



© KAN

# Technical Measures



## Next steps

- seeking for real **technical measure**
- **Sensitize you and your colleagues!**
- please **report back** accidents or possible solutions
- **standard** for treatment tables will be developed – please support this!  
(international / European / national?)





# Quick couplers on earth-moving machinery



© Pic: Münch, BG BAU / photo composition: Steindesign

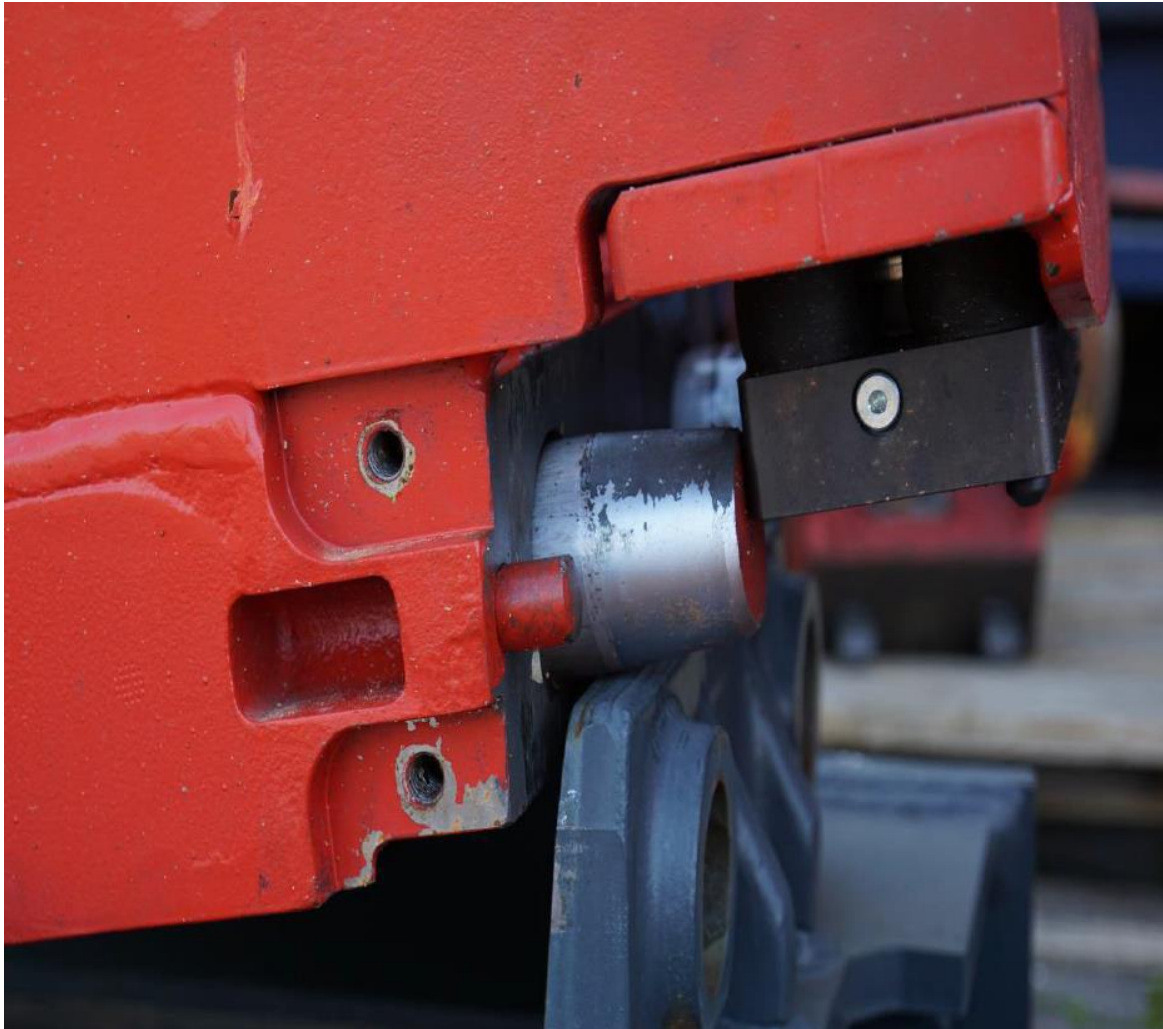
## Correct engagement



© Pics: BG BAU

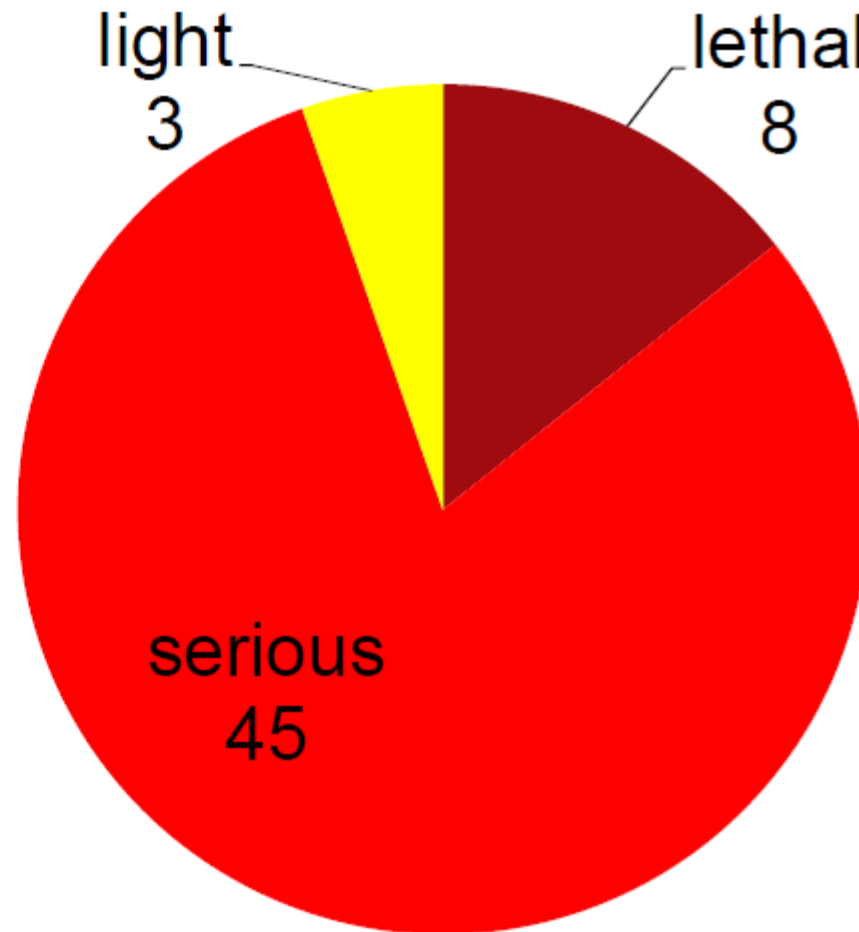


# Incorrect engagement



# BG BAU: Accidents with quick couplers 2010... June 2018

absolute: 56



## Reasons for accidents:

- Not engaged correct
- Not engaged
- technical fault



## Improve relevant standards

- harmonised European standard EN 474-1 Annex B
- soon to be published: EN 474-1 Amendment 6: refers to ISO 13031

However:

- These improvements are not sufficient to minimize accidents and do not represent the state of the art.
- continues to leave control exclusively to the machine operator
- Action is ongoing in machinery AdCo, MWG
- CEN started discussions but currently on hold (waits for results of MWG)



© Pic: BG BAU