




The Social Scoreboard revisited

- ec.europa.eu/social/BlobServlet?docId=17613&langId=en
- <https://composite-indicators.jrc.ec.europa.eu/social-scoreboard/#>
- key findings

- 
- Scoreboard, published April 2017, headline indicators plus supplementary indicators,
 - relationship to other sets of indicators?
 - what will it be used for, depends on what Social Pillar becomes, tools for assessing progress, for policy recommendations?
 - what indicators are assessed against, depends on objective/standards
 - objective of upward convergence? of reaching defined standards?

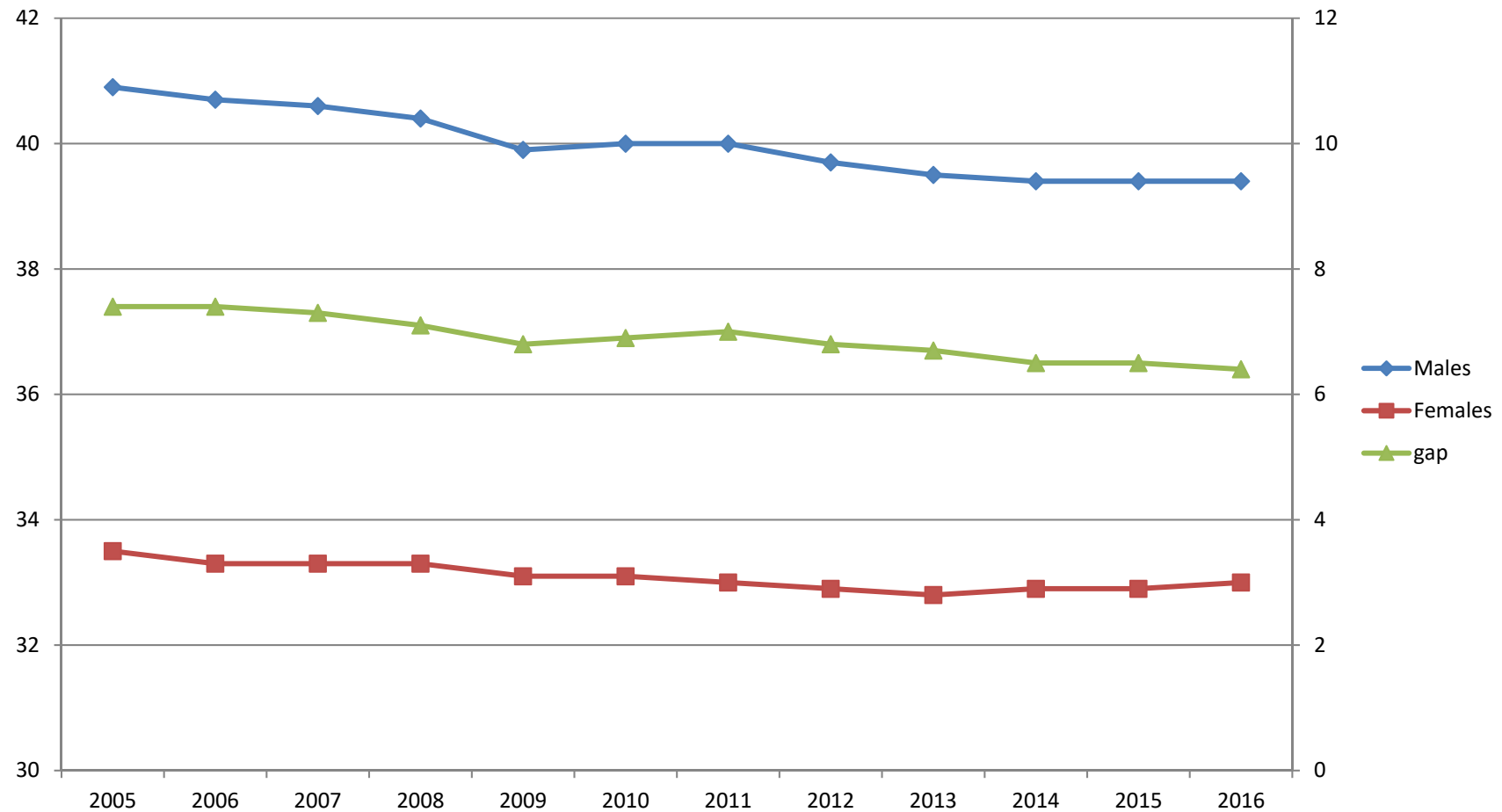
- 
- Foresaw possible substantial role,
 - we should contribute to making it as good as possible,
 - looked at and assessed indicators plus commentary, report in public domain in various forms for some months,
 - not a complete alternative, but a commentary with suggestions.

- 
- some errors, some odd choices of time periods for comparison (very short, looks like getting better), some assessments of data we thought could be improved,
 - much of it since improved, sometimes quite close to our comments,
 - still would like more consistency in time period, more consistency in message, in standard.

Theme 2, gender gap

- Pick some themes
- gender equality in the labour market, No.2
- cannot measure as difference in employment rates,
- should take account of average number of actual hours worked

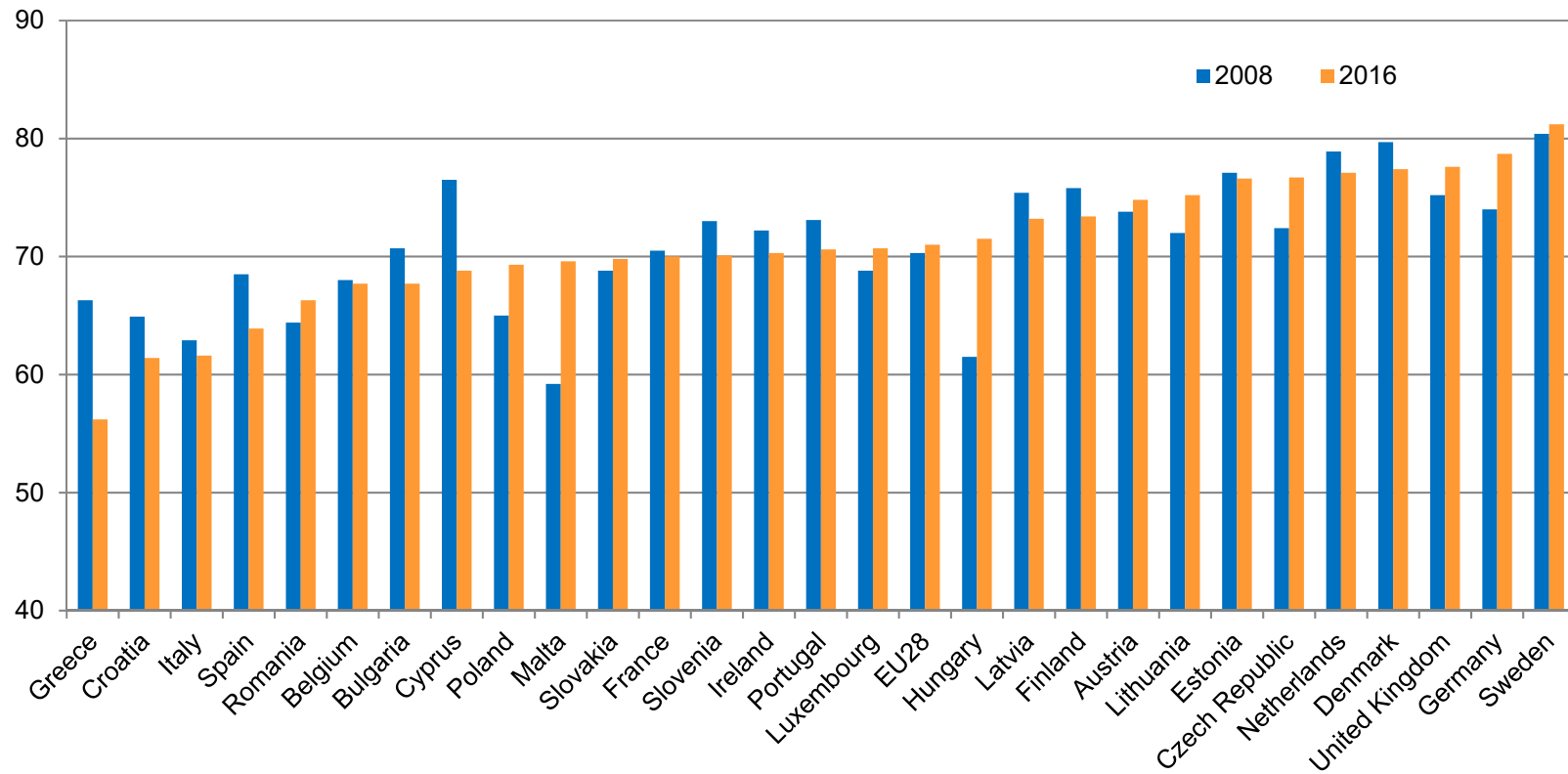
Hours worked EU 28



Theme 6 employment rate

- moved much closer together, drops claim 'more people have jobs', actually less 2015 against 2008 by 1.62 mn,
- we use a longer time period for comparison,
- EU28, average from very different trends.

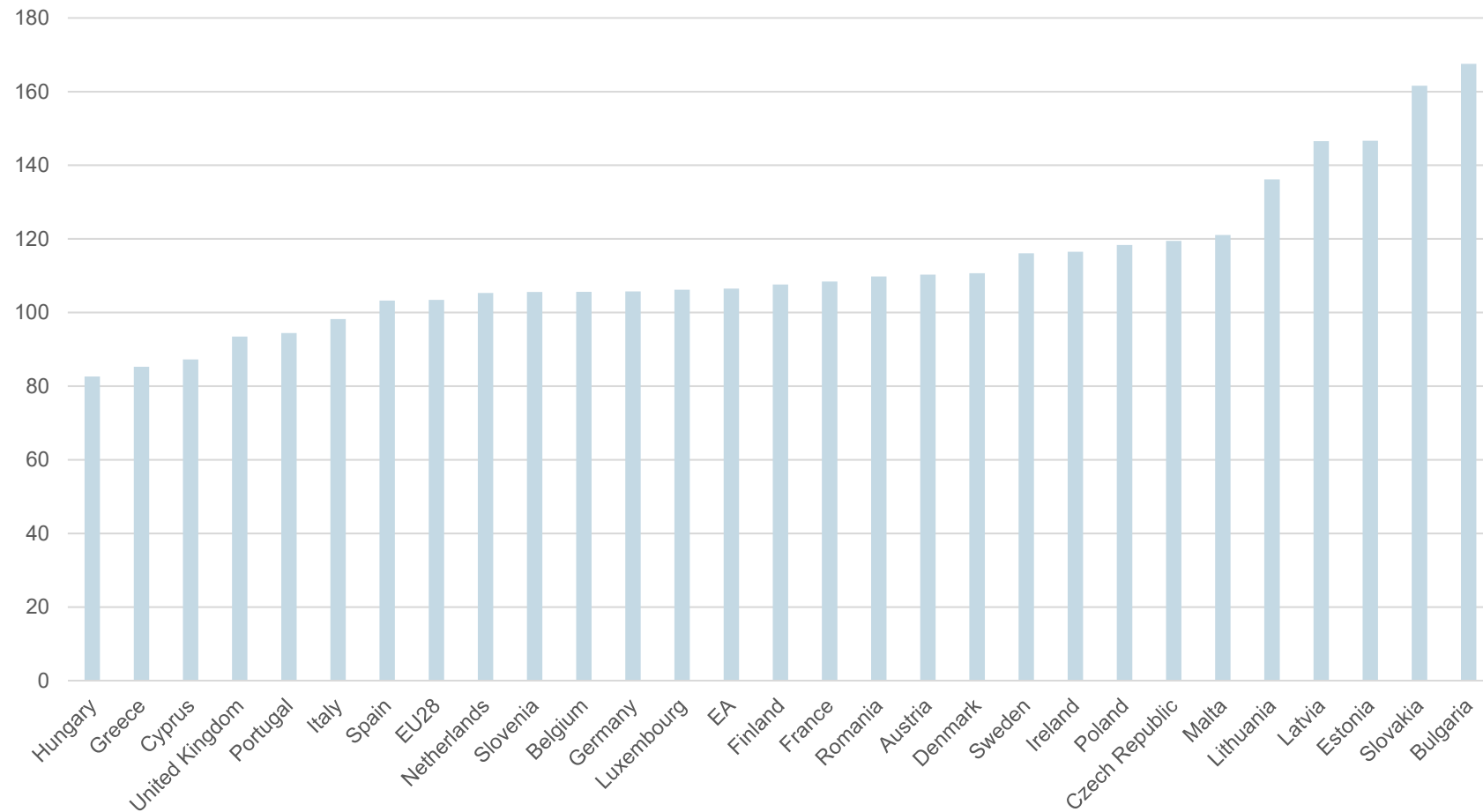
Employment rate 2008-16



Theme 8 employment compensation

- Good indicator of labour costs, shows divergences, not consistent narrowing,
- nominal levels mean little for whole EU, better to compare real levels,
- show real levels for countries instead of their all-EU nominal figures.

Real comp, 2005=100



Conclude

- What will it be used for?
- why not consistent time period for comparison wherever possible?
- what guiding questions? Include upward convergence?
- many other areas could be considered, without having too much.